

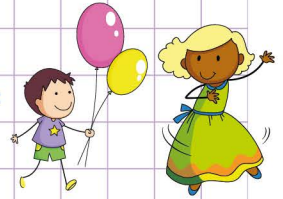
Name: ..... Class: .....

## Multiply fractions - word problems

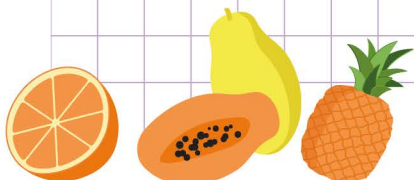
1. In Abigaël's boarding school,  $\frac{1}{2}$  of the students are in the school playground. Of those students,  $\frac{3}{4}$  are in various sport uniforms. What fraction of Abigaël's boarding school students are in various sport uniforms ?



2.  $\frac{4}{6}$  of the left over cake from Mia's birthday is still in the fridge. Mia's brother Bob decided to eat  $\frac{2}{4}$  of the cake. What fraction of cake did Mia's brother ate ? (write your answer in its lowest form).



3. Mrs Adams is the head of a health club in their local community.  $\frac{2}{3}$  of the members like fruits. Among those who like fruits,  $\frac{5}{10}$  like oranges more than anything. What fraction of members are fond of oranges ? (write your answer in its lowest term).



Name: ..... Class: .....

## Multiply fractions - word problems

1. In Abigaël's boarding school,  $\frac{1}{2}$  of the students are in the school playground. Of those students,  $\frac{3}{4}$  are in various sport uniforms. What fraction of Abigaël's boarding school students are in various sport uniforms ?



▶ students in playground:  $\frac{1}{2}$

▶ those with sport uniforms:  $\frac{3}{4}$

Multiplication

$$\frac{1}{2} \times \frac{3}{4} = \frac{1 \times 3}{2 \times 4} = \frac{3}{8}$$

Therefore,  $\frac{3}{8}$  students are in various sport uniforms.

2.  $\frac{4}{6}$  of the left over cake from Mia's birthday is still in the fridge. Mia's brother Bob decided to eat  $\frac{2}{4}$  of the cake. What fraction of cake did Mia's brother eat ? (write your answer in its lowest form).



▶ fraction of cake in the fridge:  $\frac{4}{6}$

▶ fraction of cake Bob ate:  $\frac{2}{4}$  of  $\frac{4}{6}$

Multiplication

$$\frac{2}{4} \times \frac{4}{6} = \frac{\cancel{8}^1}{\cancel{24}^3} = \frac{1}{3}$$

Bob ate  $\frac{1}{3}$  of the cake

3. Mrs Adams is the head of a health club in their local community.  $\frac{2}{3}$  of the members like fruits. Among those who like fruits,  $\frac{5}{10}$  like oranges more than anything. What fraction of members are fond of oranges ? (write your answer in its lowest term).

▶ women members:  $\frac{2}{3}$

▶ vegeterians women:  $\frac{5}{10}$  of  $\frac{2}{3}$

Multiplication

$$\frac{5}{10} \times \frac{2}{3} = \frac{5 \times 2}{10 \times 3} = \frac{\cancel{10}^1}{\cancel{30}^3} = \frac{1}{3}$$

Therefore,  $\frac{1}{3}$  members are fond of oranges.

