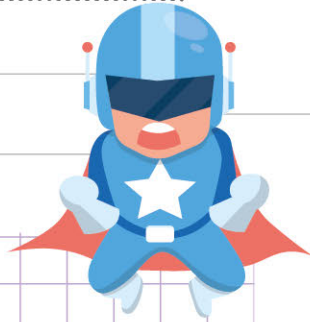


Name:

Class:

Comparing numbers with addition and subtraction



Tick the number that makes the statement below true.

Example.

$$15 - ? < 17 - 3$$

1

9

Let's first of all solve the right hand side.

$$17 - 3 = 14$$

Now, let's try both numbers on the left hand side.

Then, compare to 14.

$$15 - 1 = 14$$

$$15 - 9 = 6$$

You see that, 6 is less than 14.

So, the number 9 makes the statement $15 - ? < 17 - 3$ true.

a. $4 + 0 = 8 - ?$

4

5

d. $2 + 7 > 10 - ?$

1

8

g. $4 + 4 = ? + 3$

6

5

b. $67 - 42 < 67 - ?$

23

64

e. $? + 72 < 54 + 74$

1

20

h. $95 - ? > 60 + 12$

45

10

c. $? + 90 > 55 + 55$

75

85

f. $34 - 21 > ? - 7$

2

15

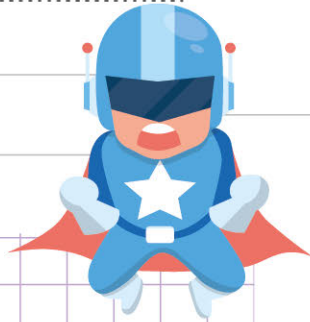
i. $89 - ? < 100 - 30$

39

10

Name: Class:

Comparing numbers with addition and subtraction

Example.

$15 - ? < 17 - 3$

 1 9

Let's first of all solve the right hand side.

$17 - 3 = 14$

Now, let's try both numbers on the left hand side.

Then, compare to 14.

$15 - 1 = 14$

$15 - 9 = 6$

You see that, 6 is less than 14.

So, the number 9 makes the statement $15 - ? < 17 - 3$ true.

a. $4 + 0 = 8 - ?$

 4 5

d. $2 + 7 > 10 - ?$

 1 8

g. $4 + 4 = ? + 3$

 6 5

b. $67 - 42 < 67 - ?$

 23 64

e. $? + 72 < 54 + 74$

 1 20

h. $95 - ? > 60 + 12$

 45 10

c. $? + 90 > 55 + 55$

 75 85

f. $34 - 21 > ? - 7$

 2 15

i. $89 - ? < 100 - 30$

 39 10