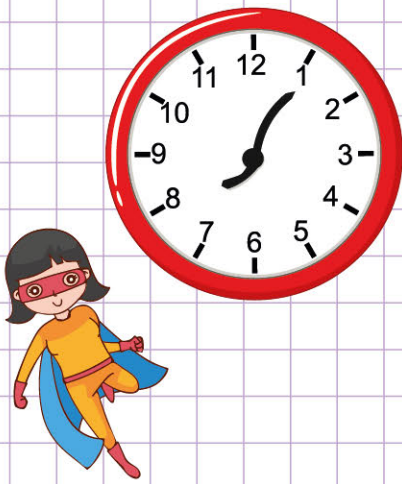


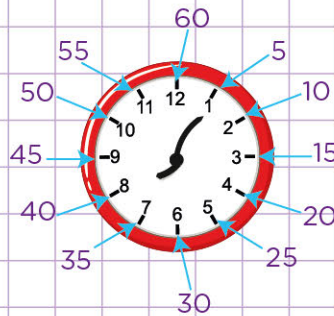
Name: Class:

Matching clocks and time in words

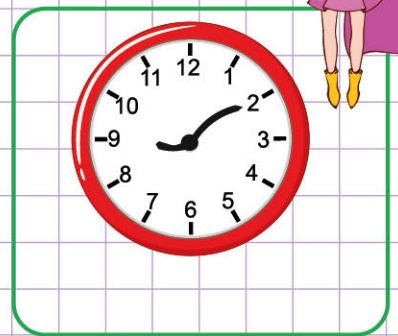
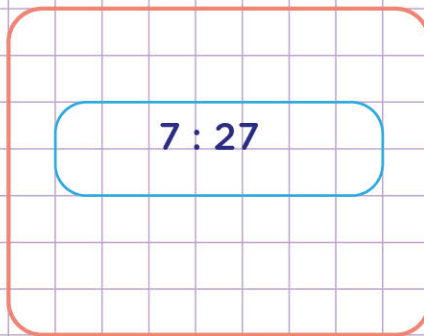
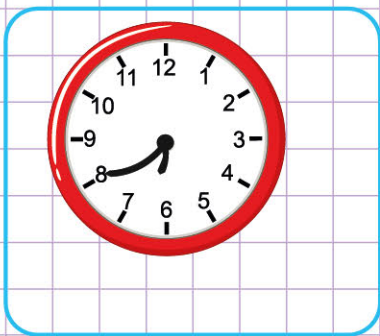
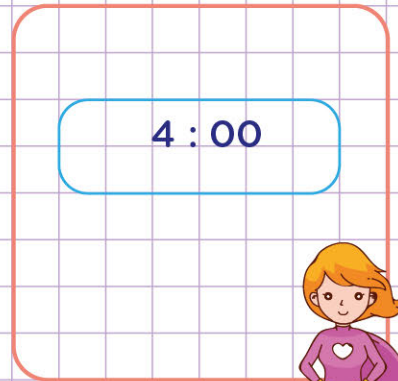
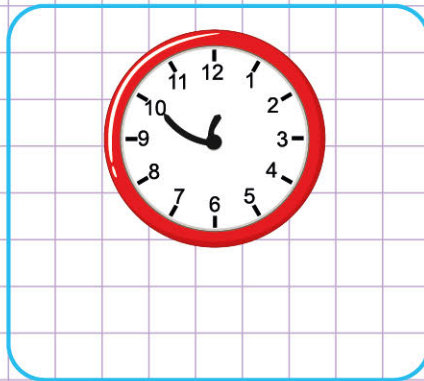
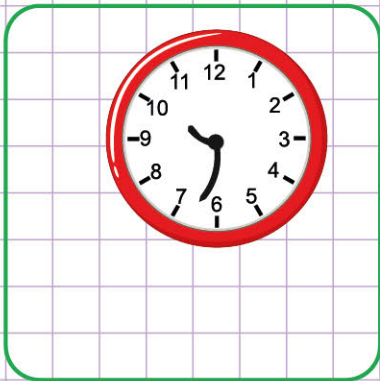
1. Write the times that the following clocks show in words.



We know that, the short hand tells what hour it is and the long hand tells what minute it is. First, write the number where the short hand is on the clock to represent the hour. **The short hand is 8 = 8 hours.** Secondly, to find the minute, locate where the long hand is on the clock and write down the number.



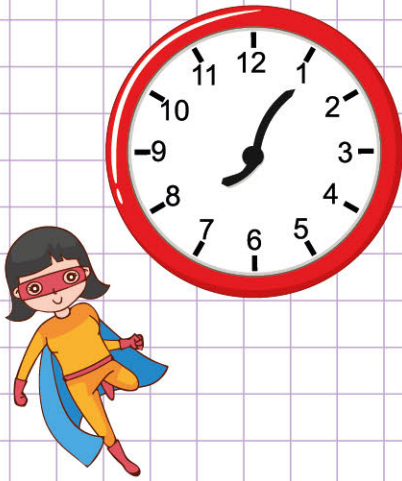
You see that, the long hand falls on 1 which is equivalent to **5 minutes.** Finally, let's write the time in words. Now, we write the hours first, colon (:), then the minutes written is two digits **8:05 (8 hours and 5 minutes)**
So, in words it is **eight five.**



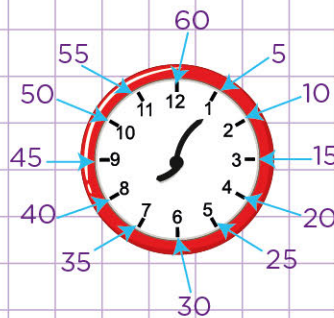
Name: Class:

Matching clocks and time in words

1. Write the times that the following clocks show in words.



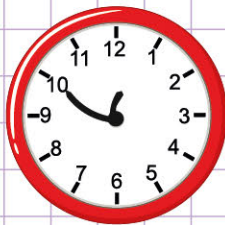
We know that, the short hand tells what hour it is and the long hand tells what minute it is. First, write the number where the short hand is on the clock to represent the hour. **The short hand is 8 = 8 hours.** Secondly, to find the minute, locate where the long hand is on the clock and write down the number.



You see that, the long hand falls on 1 which is equivalent to **5 minutes.** Finally, let's write the time in words. Now, we write the hours first, colon (:), then the minutes written is two digits **8:05 (8 hours and 5 minutes)**
So, in words it is **eight five.**



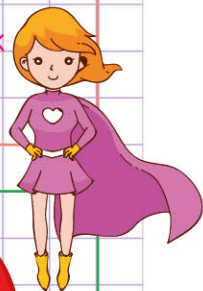
Ten thirty - three



Twelve fifty

4 : 00

four o'clock



Six forty

7 : 27

seven twenty-seven



nine ten