

Name: Class:

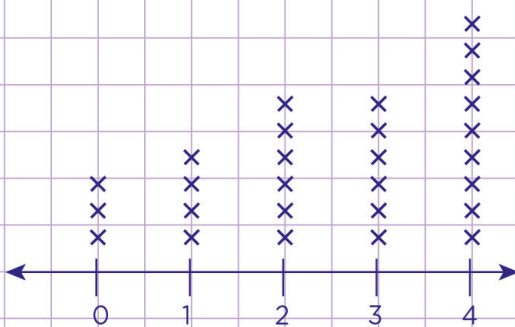
Interpret line plots



- a. Use the line plot below to answer the following questions.

Reports sent last week by employees

x stands for an employee



How many employees sent in their reports all together?

How many employees didn't send their reports last week?

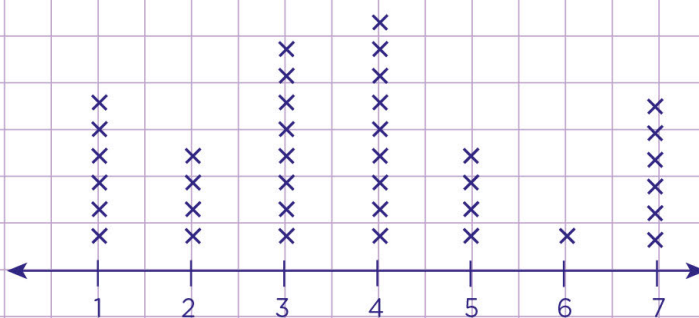
Reports sent

How many reports were sent by the highest number of employees?

- b. Belta is a librarian. Last month, she recorded the number of books that were checked out by some people on a line plot.

Study the line plot below and answer the following questions

Checking out books from the library



x equal to one person

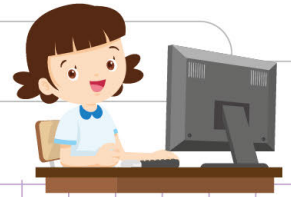
How many people checked out more than 4 books?

How many people checked out less than or equal to 3 books?



Name: Class:

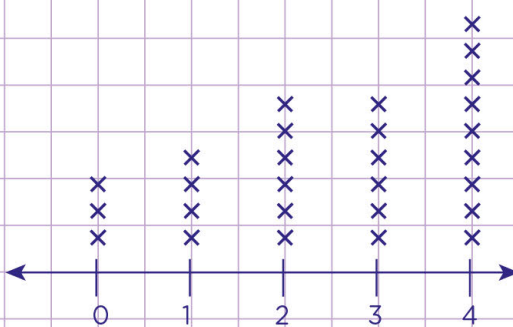
Interpret line plots



a. Use the line plot below to answer the following questions.

Reports sent last week by employees

x stands for an employee



How many employees sent in their reports all together?

Count all the x's in the columns except that of 0.

There are 25 x's. So, 25 employees sent in their reports last week.

How many employees didn't send their reports last week?

Count all the x's on the 0 digit.

There are 3 x's. So, 3 employees didn't send in their report last week.

Reports sent

How many reports were sent by the highest number of employees?

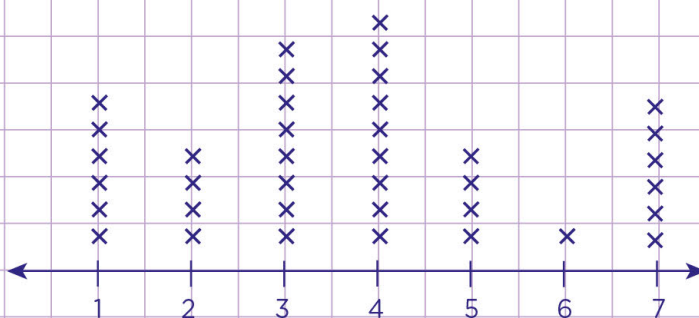
You see that the digit with the highest number of employees is 4.

So, 4 reports were sent in by the highest number of employees.

b. Belta is a librarian. Last month, she recorded the number of books that were checked out by some people on a line plot.

Study the line plot below and answer the following questions

Checking out books from the library



x equal to one person

How many people checked out more than 4 books?

Let's count the number of x's on the digits greater than 4 on the line plot.

So, 11 people checked out more than 4 books from the library.

How many people checked out less than or equal to 3 books?

Let's count the number of x's on the digit less than 4 on the line plot.

So, 18 people checked out less than or equal to 3 books from the library.

