

Name: Class:

Inequalities with addition and subtraction of mixed numbers.

Which sign makes the following statements true. complete with **>**, **<**, or **=**.

$5\frac{1}{4} - 1\frac{1}{8}$

$3\frac{1}{2} + 5\frac{3}{6}$

$2\frac{1}{4} + 3\frac{4}{6}$

$2\frac{1}{3} + 3\frac{1}{3}$

$6\frac{2}{4} - 3\frac{1}{4}$

$8\frac{2}{4} - 5\frac{1}{4}$

$6\frac{5}{10} + 8\frac{1}{5}$

$2\frac{4}{14} + 7\frac{1}{7}$

$2\frac{1}{8} + 1\frac{7}{8}$

4

$9\frac{8}{9} - 7\frac{9}{18}$

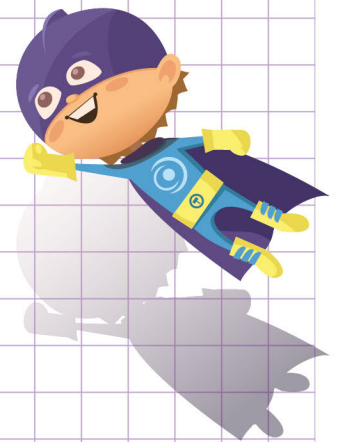
$\frac{1}{1} + 2\frac{5}{20}$

$5\frac{3}{4} - 1\frac{5}{8}$

$4\frac{1}{9} - 3\frac{2}{3}$

$3\frac{2}{3} + 2\frac{2}{3}$

$8\frac{5}{8} - 1\frac{4}{6}$



Name: Class:

Inequalities with addition and subtraction of mixed numbers.

Which sign makes the following statements true. complete with $>$, $<$, or $=$.

$5\frac{1}{4} - 1\frac{1}{8}$

 $<$

$3\frac{1}{2} + 5\frac{3}{6}$

$2\frac{1}{4} + 3\frac{4}{6}$

 $>$

$2\frac{1}{3} + 3\frac{1}{3}$

$6\frac{2}{4} - 3\frac{1}{4}$

 $=$

$8\frac{2}{4} - 5\frac{1}{4}$

$6\frac{5}{10} + 8\frac{1}{5}$

 $>$

$2\frac{4}{14} + 7\frac{1}{7}$

$2\frac{1}{8} + 1\frac{7}{8}$

 $=$

4

$9\frac{8}{9} - 7\frac{9}{18}$

 $<$

$\frac{1}{1} + 2\frac{5}{20}$

$5\frac{3}{4} - 1\frac{5}{8}$

 $>$

$4\frac{1}{9} - 3\frac{2}{3}$

$3\frac{2}{3} + 2\frac{2}{3}$

 $<$

$8\frac{5}{8} - 1\frac{4}{6}$

