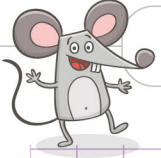


Name: ..... Class: .....



## Scaling whole numbers by fractions. Justify your answer

Choose the correct sign to compare the expressions below  $>$ ,  $<$  or  $=$  and explain why your answer is correct by filling the blank spaces using the following words: **smaller, less than 1, larger, greater than 1**

a.  $10 \times \frac{3}{4}$   10

Since  $\frac{3}{4}$  is \_\_\_\_\_, multiply 10 by  $\frac{3}{4}$  makes the value \_\_\_\_\_.

b.  $6 \times \frac{9}{5}$   6

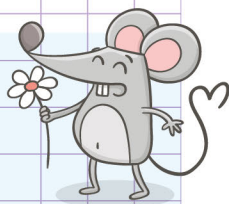
Since  $\frac{9}{5}$  is \_\_\_\_\_, multiply 6 by  $\frac{9}{5}$  makes the value \_\_\_\_\_.

c. 12   $12 \times \frac{2}{5}$

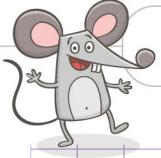
Since  $\frac{2}{5}$  is \_\_\_\_\_,

d. 7   $7 \times \frac{3}{2}$

e.  $17 \times \frac{5}{4}$   17



Name: ..... Class: .....



Scaling whole numbers by fractions. Justify your answer

Choose the correct sign to compare the expressions below  $>$ ,  $<$  or  $=$  and explain why your answer is correct by filling the blank spaces using the following words: **smaller, less than 1, larger, greater than 1**

a.  $10 \times \frac{3}{4} < 10$

Since  $\frac{3}{4}$  is **less than 1**, multiply 10 by  $\frac{3}{4}$  makes the value **smaller**.

b.  $6 \times \frac{9}{5} > 6$

Since  $\frac{9}{5}$  is **greater than 1**, multiply 6 by  $\frac{9}{5}$  makes the value **larger**.

c.  $12 > 12 \times \frac{2}{5}$

Since  $\frac{2}{5}$  is **less than 1**, multiply 12 by  $\frac{2}{5}$  makes the value **smaller**.

d.  $7 < 7 \times \frac{3}{2}$

Since  $\frac{3}{2}$  is **greater than 1**, multiply 7 by  $\frac{3}{2}$  makes the value **larger**.

e.  $17 \times \frac{5}{4} > 17$

Since  $\frac{5}{4}$  is **greater than 1**, multiply 17 by  $\frac{5}{4}$  makes the value **larger**.

