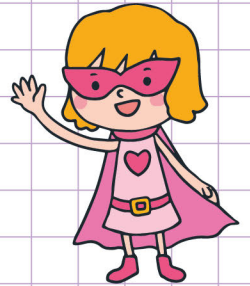


Name: ..... Class: .....

Divide whole numbers and unit fractions

a. Divide  $6 \div \frac{3}{4}$



b. Divide  $\frac{3}{4} \div 6$

c. Divide the expressions below and tick the most correct answers.

$3 \div \frac{3}{4} =$    $\frac{3 \times 4}{3}$       $\frac{12}{3}$       $\frac{9}{4}$      4

$\frac{3}{4} \div 3 =$    $\frac{8}{4}$       $\frac{1}{4}$       $\frac{1}{12}$      2

Name: ..... Class: .....

## Divide whole numbers and unit fractions

a. Divide  $6 \div \frac{3}{4}$

convert the whole number to a fraction =  $\frac{6}{1}$ 

find the reciprocal of the divisor.

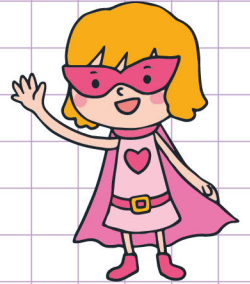
that is flip  $\frac{3}{4}$  to have  $\frac{4}{3}$ 

now, change the division sign to a multiplication sign and multiply

$$6 \div \frac{3}{4} = \frac{6}{1} \times \frac{4}{3} = \frac{6 \times 4}{1 \times 3} = \frac{24}{3}$$

simplify.  $24 = 8 \times 3$  which means  $\frac{24}{3} = \frac{8 \times 3}{3} = \frac{8}{1} \times \frac{3}{3} = 8 \times 1 = 8$ 

So,  $6 \div \frac{3}{4} = 8$



b. Divide  $\frac{3}{4} \div 6$

convert the whole number to a fraction =  $\frac{6}{1}$ 

find the reciprocal of the whole number

that is flip  $\frac{6}{1}$  to have  $\frac{1}{6}$ 

now, change the division sign to a multiplication sign and multiply

$$\frac{3}{4} \div 6 = \frac{3}{4} \times \frac{1}{6} = \frac{3 \times 1}{4 \times 6} = \frac{3}{24}$$

simplify.  $\frac{3}{8 \times 3} = \frac{1}{8}$ 

So,  $\frac{3}{4} \div 6 = \frac{1}{8}$

c. Divide the expressions below and tick the most correct answers.

$3 \div \frac{3}{4} =$    $\frac{3 \times 4}{3}$    $\frac{12}{3}$    $\frac{9}{4}$   4

$\frac{3}{4} \div 3 =$    $\frac{8}{4}$    $\frac{1}{4}$    $\frac{1}{12}$   2