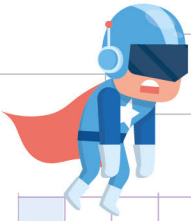
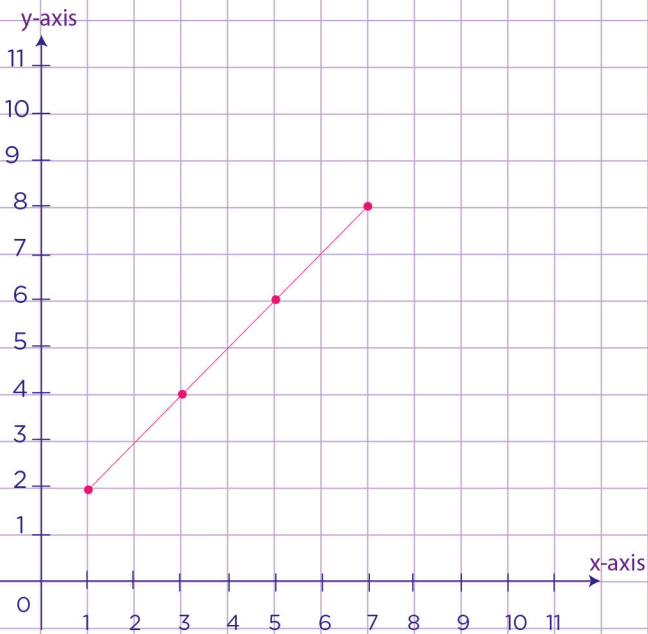


Name: Class:

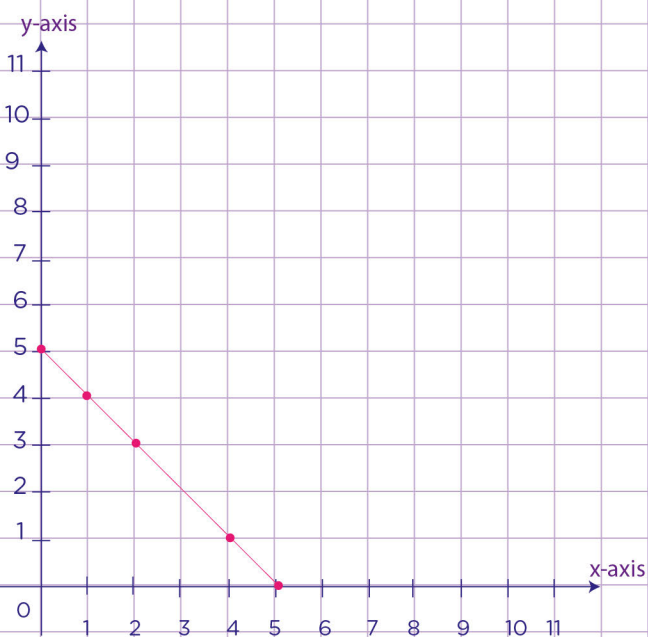


Complete a table from a graph

a. Draw and fill in the table for each relationship shown in the graph below.

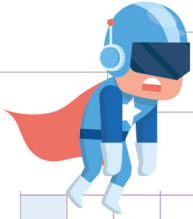


b. Draw and fill in the table for each relationship shown in the graph below.

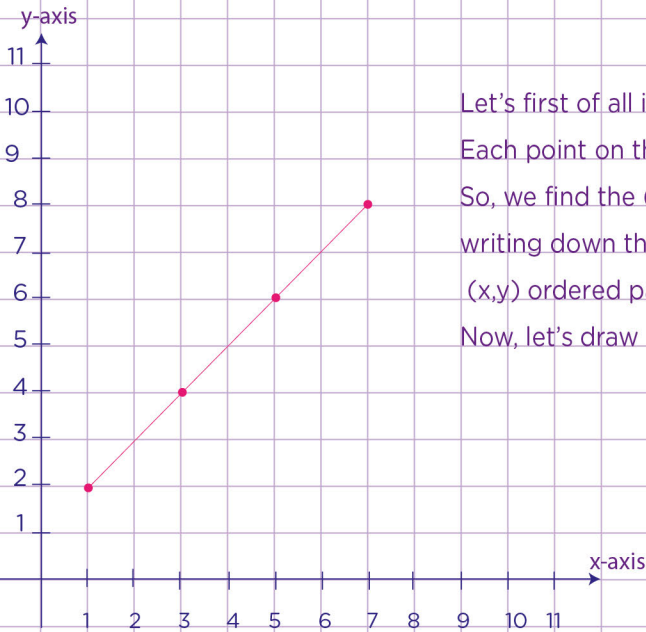


Name: Class:

Complete a table from a graph



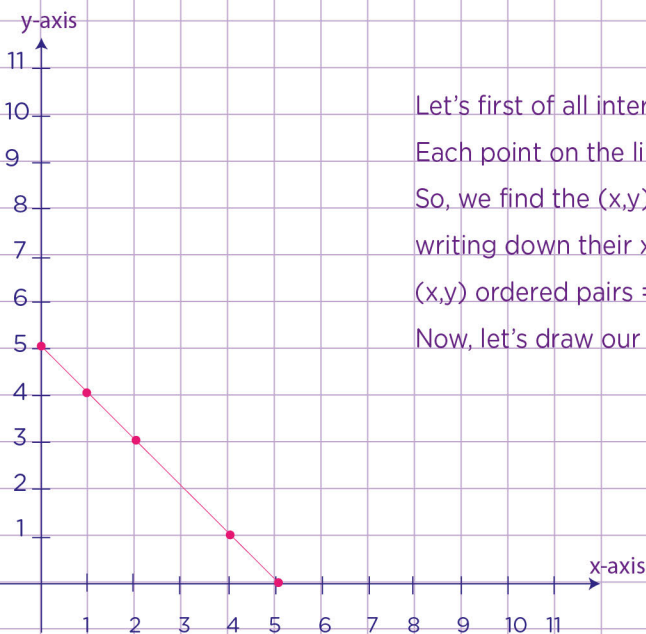
a. Draw and fill in the table for each relationship shown in the graph below.



Let's first of all interpret the graph.
 Each point on the line will represent the (x,y) ordered pair on the table.
 So, we find the (x,y) ordered pairs by looking at the points on the line and writing down their x and y coordinates.
 (x,y) ordered pairs = (1,2), (3,4), (5,6), (7,8).
 Now, let's draw our table using the ordered pairs above

x	y
1	2
3	4
5	6
7	8

b. Draw and fill in the table for each relationship shown in the graph below.



Let's first of all interpret the graph.
 Each point on the line will represent the (x,y) ordered pair on the table.
 So, we find the (x,y) ordered pairs by looking at the points on the line and writing down their x and y coordinates.
 (x,y) ordered pairs = (0,5), (1,4), (2,3), (4,1),(5,0)
 Now, let's draw our table using the ordered pairs above

x	y
0	5
1	4
2	3
4	1
5	0

